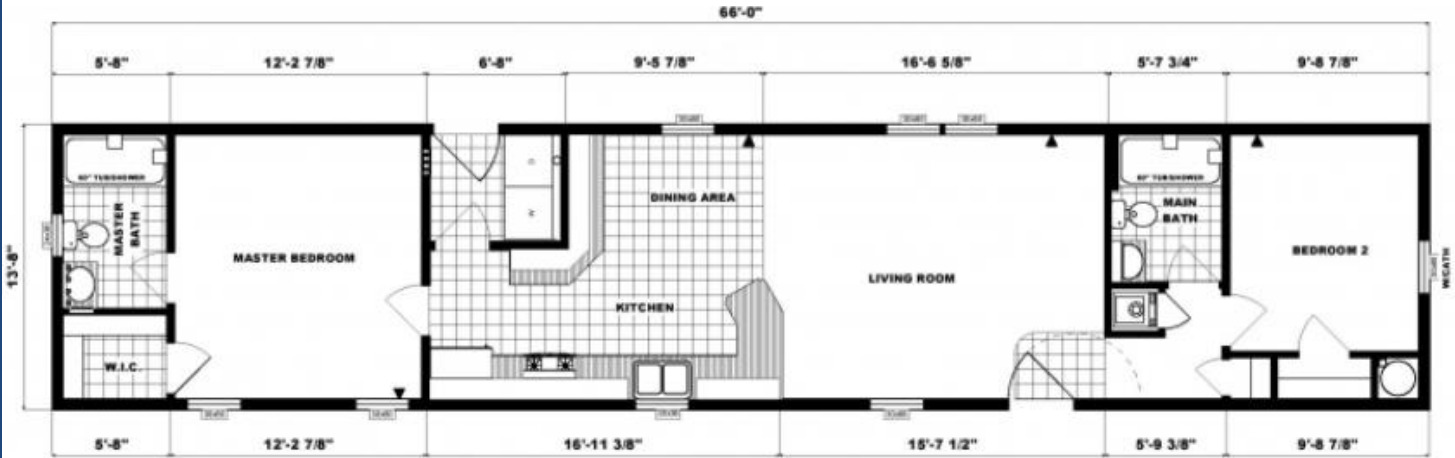


Pine Grove G618

14x70 (66) 2 Bed | 2 Bath 902 Sq Feet



Standard Features In Every Pine Grove Home

- 40# Snow Load & 16" On Center
- Miller Gas Furnace
- 40 Gallon Electric Water Heater
- Inside Water Shutoffs at all Sinks and Toilets
- Peerless (by Delta) Faucets
- Flat Panel Oak Cabinet Doors
- Laminate Backsplash
- Dining Area Chandelier
- Residential Wood Molding Profiles
- In-floor perimeter heat
- Refrigerator Overhead Cabinets
- 1 Piece Fiberglass 60" Tub/Shower
- Ice and Water Shield
- Drawer over Door Cabinets
- Solid Oak Cabinets & Face Frames w/concealed hinges
- 2 Lite White Fiberglass Rear Door
- Solid Oak Window Sills
- Energy Star Label: R33 Ceiling, R19 Walls, R19 & R27 in Floor

BHT Added Options

- Exterior Water Faucet
- Walk Out Window
- Cappuccino Hardwood Cabinet Doors
- Power Scrub Dishwasher
- Stainless Steel Appliances
- Elkay Stainless Steel Single Bowl Kitchen Sink
- Lino in Living Room IPO Carpet
- In Floor Perimeter Heat System with Perimeter Diffusers
- Energy Star Compliance Approval
R33 Ceiling, R19 Walls, R19 & R27 in Floor
- White Interior Trim Package-Includes: Heavy Profile All Wood White Molding T/O, White Window Sills and Door Jambs, Mortised Door Hinges; Lever Handles on Interior Doors
- Faux Shade Valances Only
- 1 Phone and 2 TV jacks
- 60" Shower with 2 Seats in Master Bath

See Sales Specialist for Pricing

Pine Grove Single Section Standard Features

Interior

- Complete Fabric Drapery Package with 2" Blinds or Sheers
- Vinyl on Gypsum Wall Covering Throughout ½"
- Residential Ceiling Fixtures in All Bedrooms
- Switched Ceiling Light in All Walk in Closets
- Chandelier in Each Designated Dining Area
- 1/2" Finished Drywall Cathedral Ceilings with Stipple Finish
- Residential Wood Molding Profiles
- Solid Oak Windowsills
- 25oz Textured Carpet Installed with Tack Strip & 5.5# Pad
- Name Brand No Wax Vinyl Flooring
- Pre-Hung Interior Doors with Residential Hinges
- Vinyl Clad Shelves in Closets and Pantries
- Foyer Entry with Vinyl Flooring at Front Door

Cabinetry

- KCMA APPROVED Cabinetry Built by Blue Mountain Cabinet Co.
- Solid Oak Cabinets with ¾" Solid Oak Face Frames
- Cabinet Crown on Overhand Cabinets
- Concealed Cabinet Door Hinges
- Drawer-over-Door Base Cabinets
- Metal Drawer Guide System
- Designer Coordinated Door and Drawer Pulls
- Adjustable Shelving in Overhead Cabinets
- Shelving in All Base Cabinets

Utilities

- Miller Direct Spark Gas Furnace w/Metal Access Door
- In Floor Perimeter Heat Connection system w/perimeter Diffusers
- Insulated Fiberglass Heat Duct w/Sealed Crossover Connection
- 40 Gallon Electric Water Heater with Drip Pan & Exterior Drain
- PEX Hot & Cold Water Lines and Schedule 40 Drain Lines & Enclosed Water & Drain Lines
- Plumbing for Washer
- Wire and Vent for Dryer
- Water Shut Offs at all Fixtures
- 100 Amp Service
- Hard Wired Smoke Alarms with Battery Back Up
- Copper Wiring Throughout
- Switched Receptacle in Living Room
- GFCI Protected Exterior Receptacles
- GFCI Protected Receptacle(s) in Wet Areas

Kitchen

- 33' x 19" x 7" Deep Double Bowl Stainless Steel Kitchen Sink
- Peerless by Delta Single Lever Faucet with Sprayer
- Soffit Light over the Sink
- Refrigerator Overhead Cabinets
- Wilson Art or Formica Laminate Counter tops 25" Deep
- 4" Laminate Backsplash on All Counters
- White 18 Cu Ft Refrigerator by Whirlpool
- White 30" Free Standing Gas Range by Whirlpool
- White 30" Vented Range Hood with Light

Bath

- One Piece Fiberglass Tub and Shower Units
- 36" High Oak Vanity Cabinets with China Sinks
- Peerless by Delta single Lever Faucets on all Fixtures
- Wilson Art or Formica Laminate Counter Tops
- 4" Laminate Backsplash on All Counters
- Oak Medicine Cabinets and/or Mirror with 24" Strip Light
- Broan Lighted Exhaust Fan in Each Bath
- 1.6 Gallon Round Front Water Saver Commode
- All Bath Fixtures are White

Exterior

- Georgia Pacific Dutch Lap Vinyl Siding
- ½" Foam Insulation Board Sheathing Installed Underneath Siding
- 25 Year IKO 3-Tab Fiberglass Roof Shingles
- Eaveguard Ice and Water Shield
- 38x82 Residential Size Fiberglass 6 Panel Front Door, NO Storm
- 38x82 Residential Size Fiberglass 2 Lite Rear Door, No storm
- Exterior Light at Each Door
- Vinyl Thermopane "Low E" Windows with Tilt Wash Feature
- 15" Raised Panel Shutters on Front Door Side & Right Gable End, 6" Fascia & Soffit with Ridge Vent

Construction

- All Wall Studs, Trusses, & Floor Joists Installed 16" On-Center
- 40 # Snow Load
- 7/16" OSB Roof Sheathing
- 2x6 Graded Wall Studs
- 7' 6" Cathedral Std. 14w (8' Flat Option); 8' Flat Std. 16w
- 2x6 Floor Joists (14' wide) 2x8 Floor Joists (16' Wide)
- 2x6 Perimeter Joists
- ¾" Tongue and Groove OSB Floor Decking
- R-19 Fiberglass Wall Insulation
- R-33 Blown in Cellulose Ceiling Insulation
- Combination of R-19 and R-27 Floor Insulation
- 12" I-Beam Foundation Frame

Codes

- HUD Code
- Energy Star Compliance
- Thermal Zone III
- Wind Zone I (Wind Zone II Available as an Option)
- Green Certified (Available as an Option)

All representations and descriptions of the Pine Grove product are believed to be accurate at the time of publication. Due to continual product improvement and changes in design, we cannot guarantee exact duplication of every product shown herein. Model availability and specifications may change without notice. Your Retailer, an independent contractor who is not an agent of Pleasant Valley Homes is the party responsible for your purchase contract and any addition, deletions, alterations, or attachments made to or in your home.